

# TOM

**Learning and Therapy System**



# User Guide

All rights reserved. It is not allowed to copy parts or the entire user guide neither photomechanically nor electronically without a written authorization.

In this user guide trade marks are being used without guarantee of free usability. Images and texts have been prepared with a high grade of accuracy. However, the producer cannot assume the liability for exact indications and descriptions and their consequences. TOM – Learning and Therapy System is not allowed to be altered, passed on or used for other purposes as declared in the contract of sale without explicit written authorization.

The copyright of TOM – Learning and Therapy System and its components is the exclusive property of Platus Learning Systems or the respective producers.

The customer only acquires the software and the components and has no right of disclosing the source code. Renting, transfer and alteration of the software or the components is prohibited unless it has been declared explicitly.

Copyright  
©Platus Learning Systems GmbH

**Authors:** Hannes Liegle  
Ulrike Liegle

Edition 2010-03

Producer: Platus Learning Systems GmbH  
Distribution: Platus Learning Systems GmbH,  
A-4690 Schwanenstadt, Stadtplatz 24

The warranty claim is 6 months from the date of purchase for commercial customers. The warranty claim for end users is the statutory warranty period. Subject to change.

The license for TOM - Learning and Therapy System is acquired either by the purchase of a set or by the purchase of a single component (box) "Activity Board", which includes the Activity Board (Input board), installation CD, the manual and the symbols "Yes", "No" and "READY". It is thus possible to install the TOM software on multiple PCs. For simultaneous use on multiple PCs, a corresponding number of boxes "Activity Board" is required. Permission is granted to only make one backup copy of the TOM software. Other copies of the programme are strictly prohibited.

**Distributor:**

Made in Austria

# Index

- General ..... 4**
- 1. Purpose ..... 4
- 2. Note for maintenance and safety checks ..... 5
- 3. Equipment life ..... 5
- 4. Contact information ..... 5
- 5. Programme content ..... 5
- 6. Installation instructions ..... 6
- The program ..... 7**
- 1. The first steps ..... 7
- 2. Basic information about the programme ..... 9
- 3. Selection of the training area ..... 10
- 4. Setting exercises ..... 11
- 5. Configuration of “my objects” ..... 12
- 6. Working with syllables and words ..... 14
- 7. Working with numbers and quantities ..... 15

## General

Thank you for purchasing TOM - Learning and Therapy System. With the acquisition of a Platus<sup>®</sup> - product, you have made the right choice because Platus<sup>®</sup> guarantees maximum quality. TOM - Learning and Therapy System is a medical device according to Austrian medical law. The device and its components are not suitable for children under 3 years.

Please note the following information for the purpose and proper use of TOM - Learning and Therapy System.

### 1. Purpose

TOM is a learning and therapeutic system for children with perception disorders and learning disabilities. In addition TOM can be used for the early intervention or for children with a different first language than German. Solid carved wooden objects are placed on the Activity Board (USB connection provided) and recognized by the computer. The child takes a wooden object in its hand sees the object on the monitor and resolves the tasks. The child learns by touching. TOM can be used without mouse and keyboard.

TOM supports the auditory, visual and tactile-kinesthetic perception organization. TOM also serves to support the perception by the different sensory channels. The high degree of motivation allows the improvement of the endurance and the concentration.

In addition the eye-hand-coordination is supported and the short-term memory is trained. The goal of TOM-Learning and Therapy System is to increase the passive vocabulary and to gain speaking competence.

TOM helps patients with CP or MCP, developmental disorders, perception problems, mental and sensory impairments, low vision or fine motor problems.

#### **Achievable objectives**

##### *in the field of perception:*

- ⇒ improvement of tactile, auditory and visual perception
- ⇒ improvement of seriality and improvement of memory

##### *in the language:*

- ⇒ initiation of communication with non-speaking children
- ⇒ achieve a passive word comprehension
- ⇒ obtain a symbol comprehension

##### *in the field of learning:*

- ⇒ pronunciation and recognition of syllables and words
- ⇒ achieve the understanding of quantities

## 2. Note for maintenance and safety checks

If you have not purchased TOM Learning and Therapy System from Platus® or an authorized dealer, a maintenance and safety technical inspection by Platus® is required.

## 3. Equipment life

TOM - Learning and treatment system has an average lifespan of 7 years under normal use, regular care and maintenance. If you notice any damage or malfunction of the components please contact Platus® or your dealer immediately.

## 4. Contact information

### **Platus Learning Systems GmbH**

Stadtplatz 24

A-4690 Schwanenstadt

Tel.: +43 (0) 7673 / 41 824 Fax: +43 (0) 810 / 9554 229744

Web: [www.platus.at](http://www.platus.at)

E-Mail: [office@platus.at](mailto:office@platus.at)

If you have questions concerning TOM please contact your local dealer. Furthermore Platus® is at your disposal for any questions.

## 5. Programme content

Exercises in the areas of:

Perception

⇒ conceptualization

⇒ auditory perception

⇒ visual Perception

⇒ memory training, seriality

Letter:

⇒ single letters

⇒ multiple letters

Figures:

⇒ learning the numbers

⇒ quantities:

form of sets

associating volumes

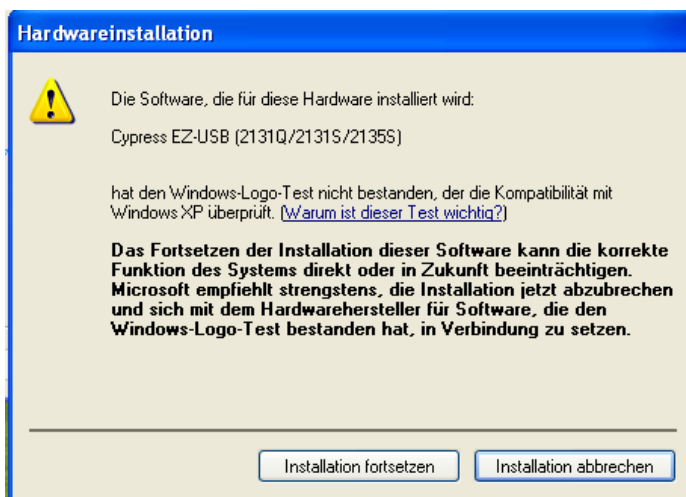


## 6. Installation instructions

Note: The software can only be installed correctly if you have administration rights on your computer. If this is not the case, please contact your network administrator.

### *Installation of the Activity Board (black input board)*

- a) Insert the Activity-Board to a free USB port. (We recommend that the Activity Board is always connected to the same USB port).
- b) If Windows does not automatically recognize the Activity Board, you will be asked for the driver. Please select that Windows does not connect to the Internet. "No, not this time"
- c) Then select "Install from a list or specific location (Advanced)".
- d) Insert the CD into the CD-ROM drive (usually drive "D:") and select this drive as the source of the driver.
- e) Confirm then with "installation".
- f) If the following screen appears (The programme has not passed the Windows-Logo-Test), click "Continue Installation". There will be no impact to your system.



This process must be repeated twice, as two different drivers (Cypress EZ-USB and RFID Reader) must be installed.

### *Install the software*

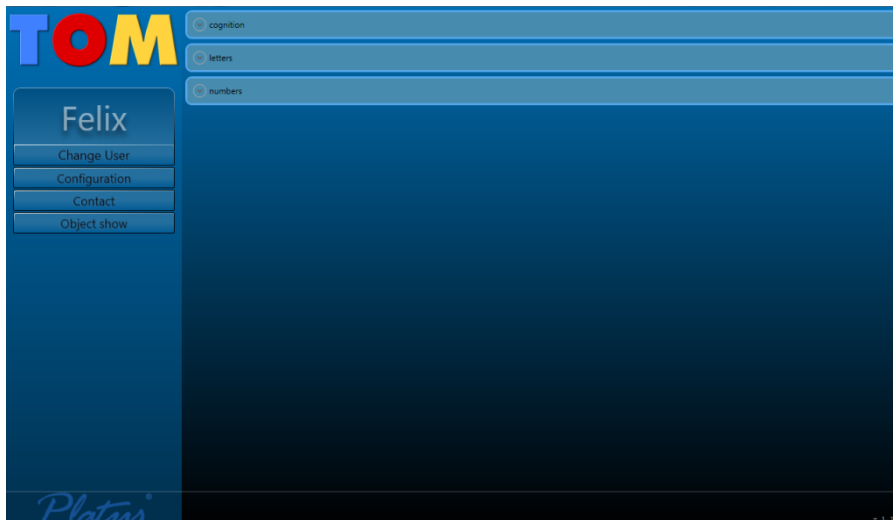
- a) Insert the CD into the CD-ROM drive of your computer. It will automatically open the installation wizard. If this is not the case, run the Setup.exe from your CD-ROM by opening the "My Computer" or the "Windows Explorer".
- b) Select a language.
- c) Click "Next" in the window of the wizard.
- d) Select a destination folder (it is recommended to leave the built-in) and click on "Install".
- e) Tom is being installed.
- f) Click "Finish" at the end of the installation.
- g) Make sure that the Activity Board is plugged into a USB port.
- h) Click on the TOM-icon on your desktop to start the programme.

## The program

### 1. The first steps

Create groups and users. Please note the following steps:

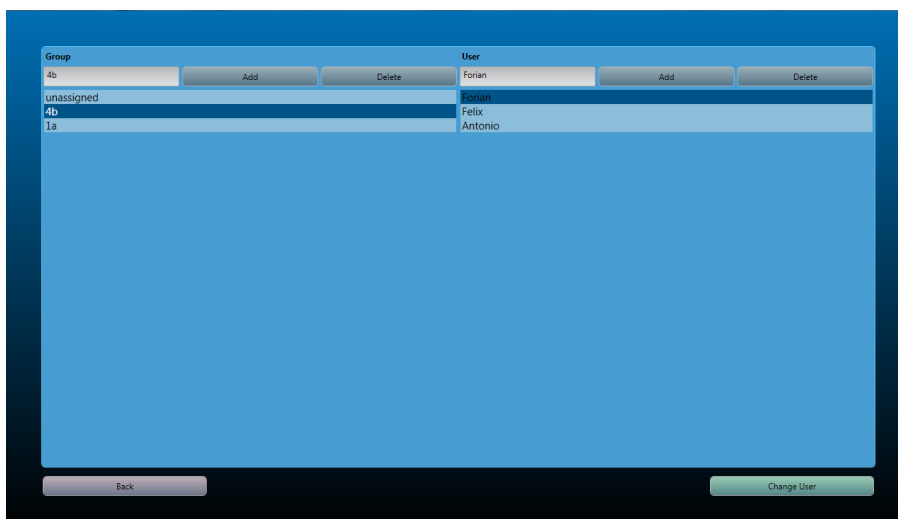
- Select the TOM-icon on the desktop and start the programme by double-clicking.
- Click on "Change User".



#### ***Creation of groups (for example: classes, ....)***

Click the Add button, enter a new group, then click on "Add".

Do you want to delete a specific group, highlight the group by mouse click and then click "Delete".

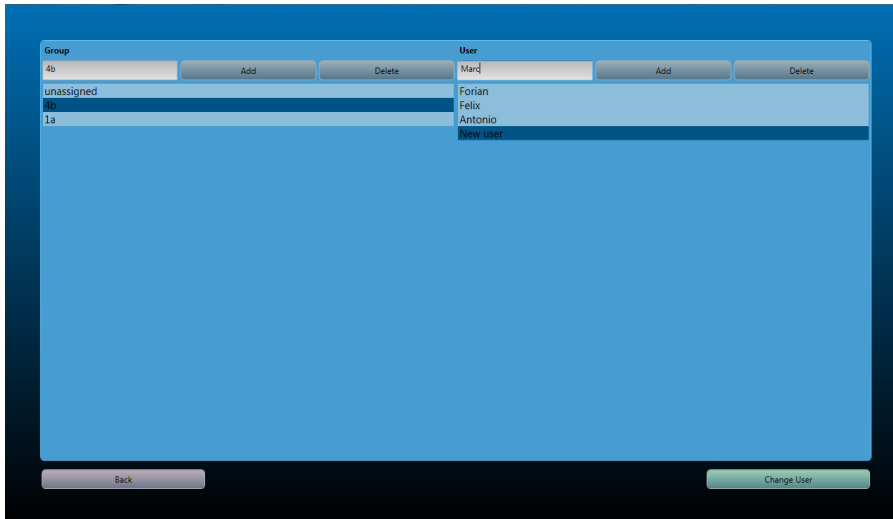


## Creation of users

Select by mouse click a group to which the student should be added.

Click "Add" and enter a "New User", then click on "Add".

Do you want to delete a particular user, highlight the user via a mouse click and then click "Delete".



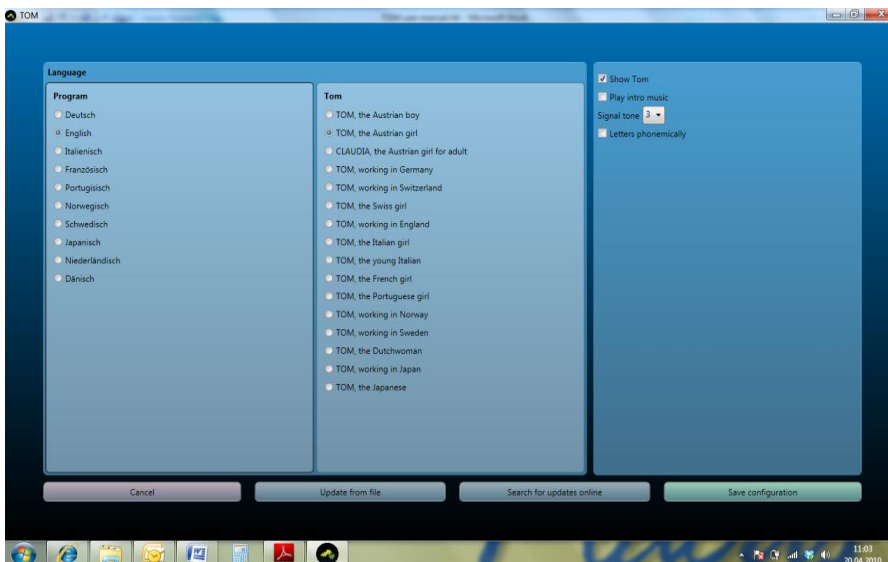
To go back to the main page, click "Back"

You can change other basic settings by clicking on the button "Settings".

⇒ Choice of programme language

⇒ Choice of language of the voice output

⇒ Settings of the user interface



If you click "Contact" on the main page you get the necessary information to get in touch with the producer.

## 2. Basic information about the programme

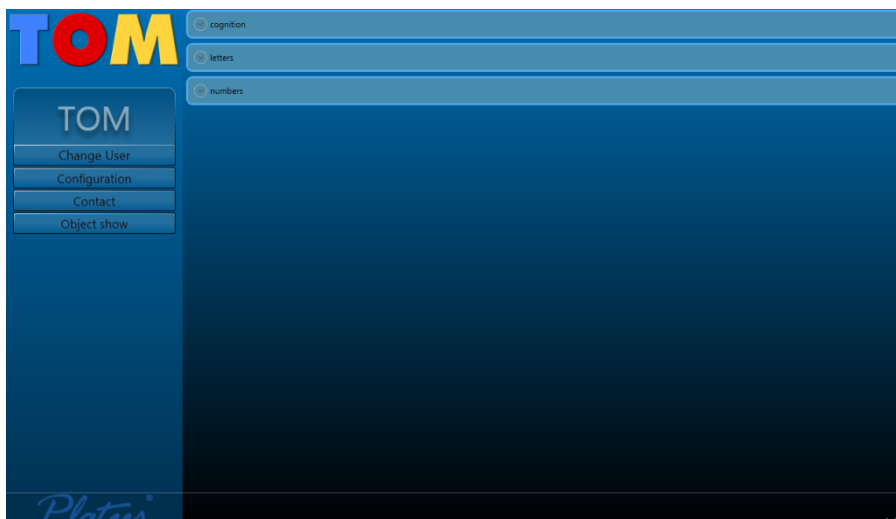
The individual training units are designed according to the grade of difficulty. You start with exercises in the field of eye-hand coordination, visual/auditory and tactile differentiation, practices in the field of seriality and the memory performance up to the learning of letters and numbers. TOM is therefore independent of age and can be used according to the cognitive capabilities of the user.

Only one object can be put on the Activity Board. Once the programme has detected the object, and and gives the appropriate feedback, the object must be withdrawn from the Activity Board. The symbol-objects allow repeating the exercise (YES), switching to the next step (NO) or quitting the exercise (READY).

A signal tone can be set in order to let the user know that an object can be placed on the Activity Board.

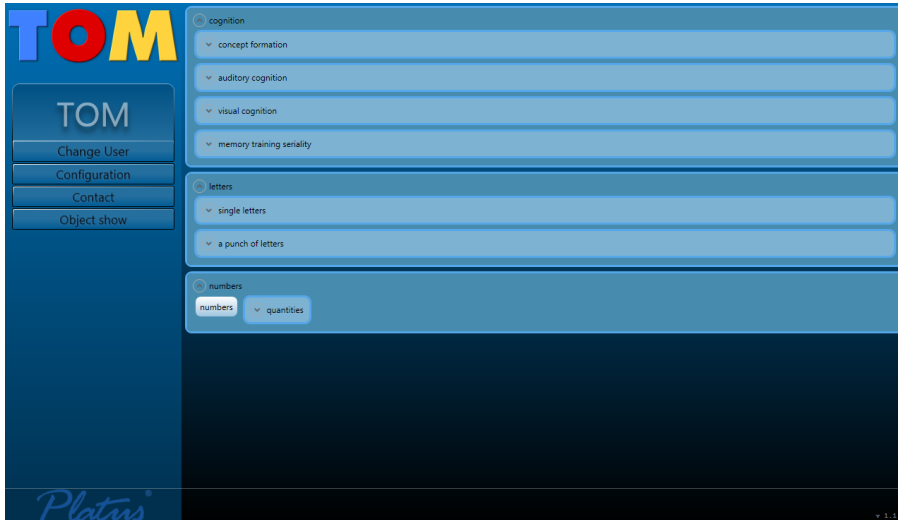
***The programme is divided into 3 areas:***

- ⇒ perception
- ⇒ letters
- ⇒ numbers

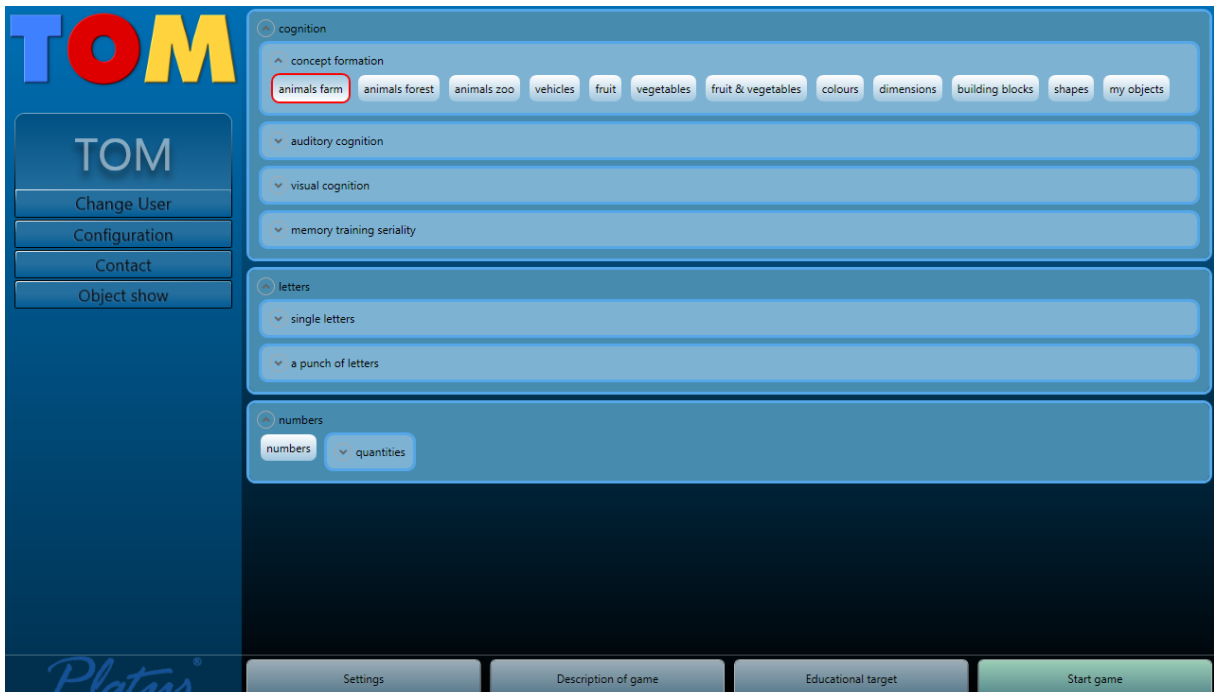


### 3. Selection of the training area

To select a practice area, click on the desired exercise.

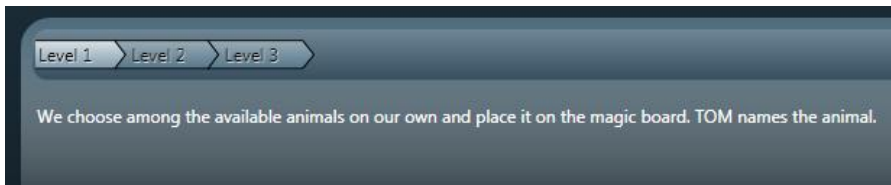
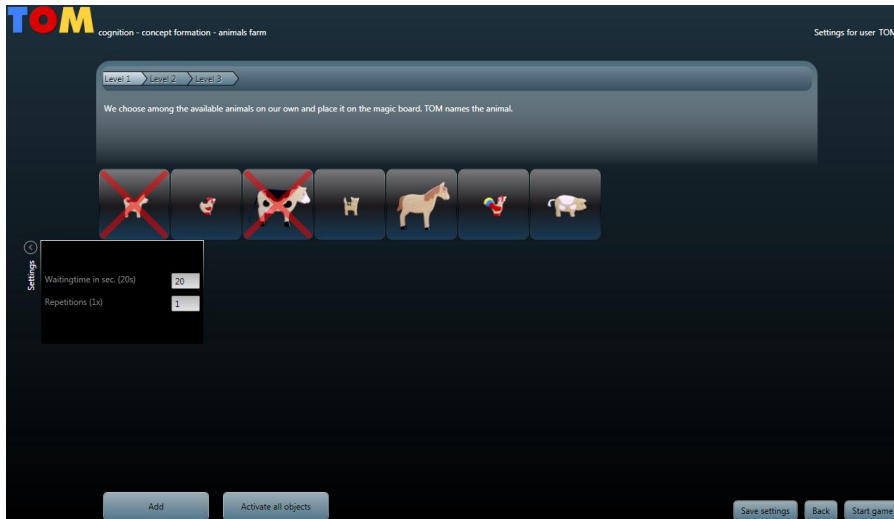


Then click on the exercise and select the corresponding box (for example: farm animals).



## 4. Setting exercises

By clicking the “Settings” button on the left you can adjust the exercise according to the user



You can choose a level as well as an exercise. The corresponding description is shown below.



By clicking you can delete certain objects from the exercises.

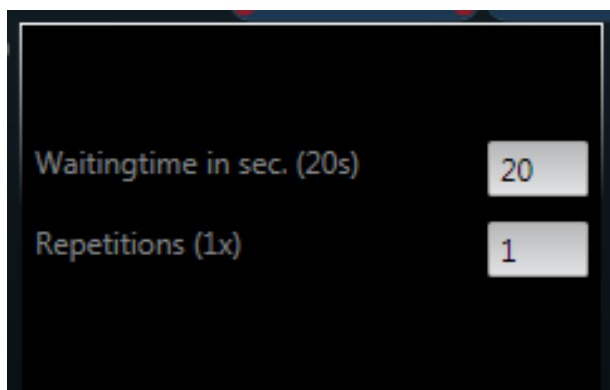
By clicking on the arrow "Settings" you can change more settings:

⇒ Waiting time in seconds: The announcement is repeated, the user is repeatedly asked to continue working.

⇒ Repeat: The number of the repetitions can be specified .

⇒ Duration: The time in order to memorize an object can be specified.

By clicking in the text box, the information can be changed



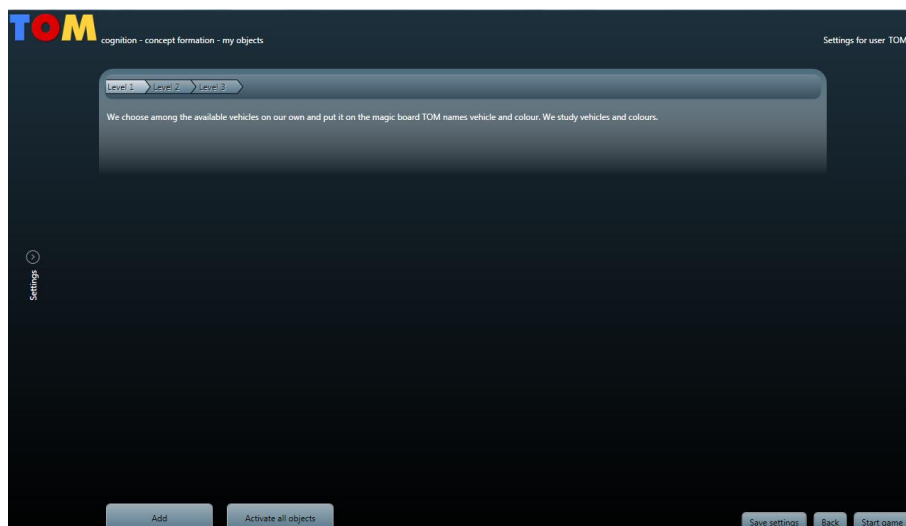
Click again on the arrow to “Settings” and the window will be closed and the data will be stored.

## 5. Configuration of “my objects”

You can purchase “my objects” (only wooden disc with a computer chip) at Platus<sup>®</sup>. By using a tape (very flexible) or a glue you can fix your own three-dimensional objects, pictures, photos on the wooden discs. Your own object can be used within the different exercises.

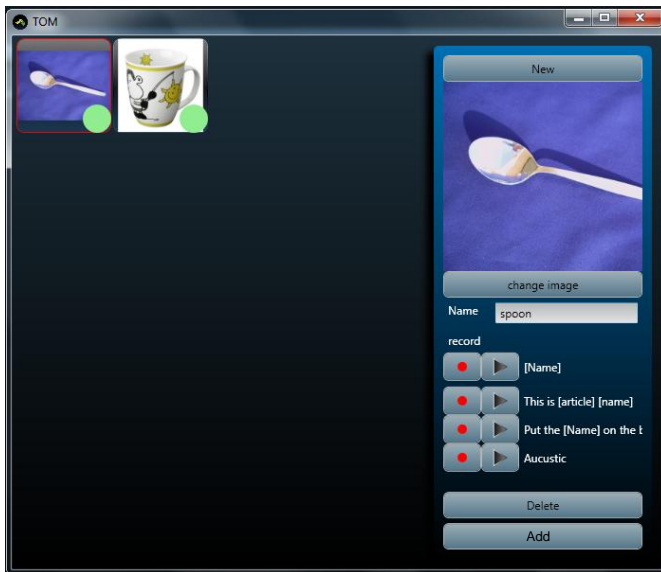
### ***The following steps are required:***

Click in the corresponding training section on “My Objects” and then on “Settings”  
The following window appears:



Click “Add”.

The following window appears:



In the example shown above, there have already been added two “my objects”. In your case the window would be empty.

The following steps must be executed:

- a) Click on "New". A frame is opened
- b) Click “Change Image” and open the desired image that you saved on your PC. It appears in the little frame (e.g. “spoon”).
- c) By clicking the text box "Name" you can enter the name of the image (spoon)
- d) Now you need to make the voice recording. Use an external microphone or the built-in microphone of your PC.

Click on the first red dot and record the name of the object: "spoon".

You can stop the recording by clicking once again on the red dot. If you want to hear the voice, click on the arrow next to the red dot.

Click on the second red dot and say the name of the object and the article "the spoon".

You can stop the recording by clicking once again on the red dot. If you want to hear the voice, click on the arrow next to the red dot.

Click on the third red dot, say "Put the spoon onto the magic board".

You can stop the recording by clicking once again on the red dot. If you want to hear the voice, click on the arrow next to the red dot.

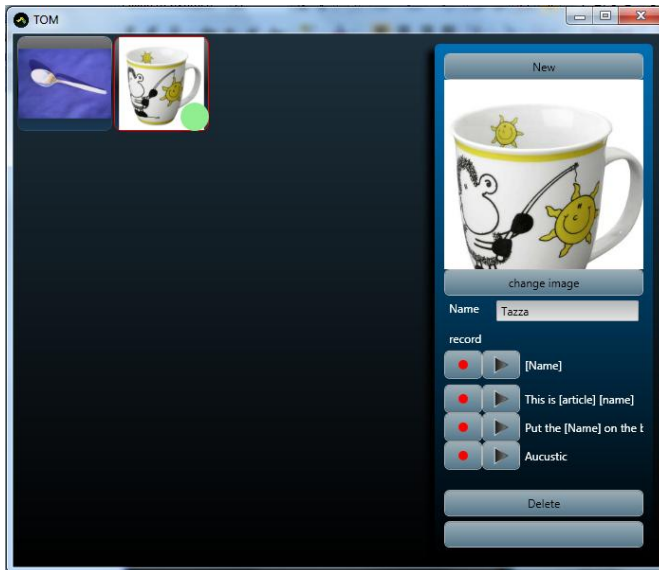
Do you want to add a sound object, execute the same operation.

- e) Now put your “my object” onto the Activity Board. The computer chip is assigned to the object you just configured, as soon as the green dot appears.
- f) If you have finished configuring the object, click on “Add”.
- g) If you want to delete an object, select the frame and click on "Delete".

- h) If you have added an item to the programme, that you do not want to use in the exercises click on the image. It is marked with a red cross.

Do you want to use all object in the exercise, click on "Activate all objects". If you want to remove an object from the exercise just click on the red dot.

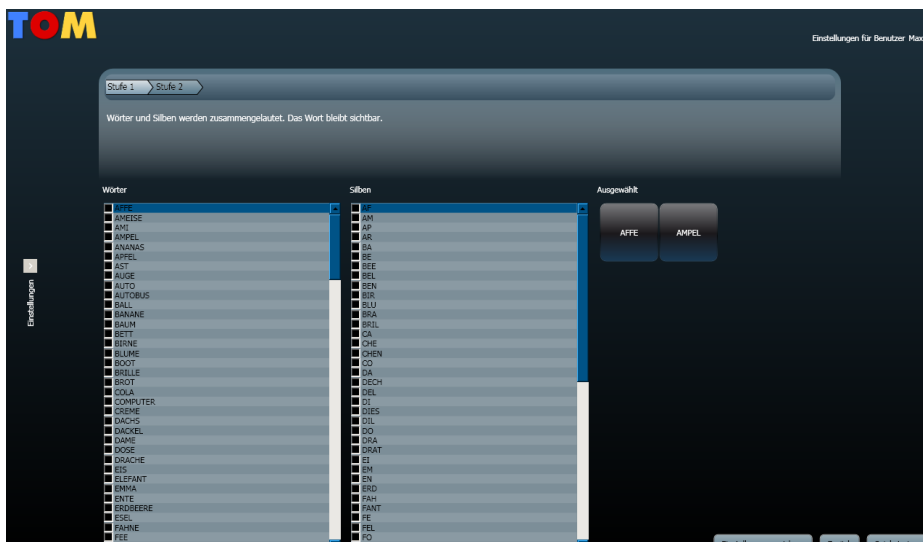
With these computer chips you can assign one chip to various objects. In the case shown below, the spoon remains, although we have added a new object (the cup). You can always check whether an object is assigned to a computer chip via the green dot.



## 6. Working with syllables and words

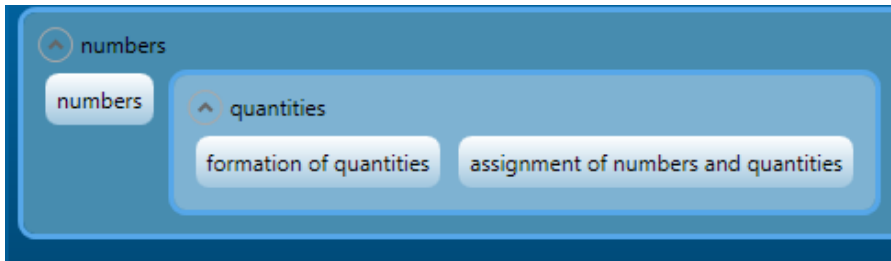
Select from the "Several letters" a practice session.

When you click on "Settings" you can select the words or syllables by clicking. The letters must be placed separately on the Activity Board. The word or syllable is written and spoken.



## 7. Working with numbers and quantities

This section allows the training of numbers as well as the assignment of numbers to quantities.



For further questions or feedback please contact us!

### **Platus Learning Systems GmbH**

Steinkogelstraße 32

A-4802 Ebensee

Tel.: +43(0)6133/9001-201, Fax: +43(0)6133/9001-202

Web: [www.platus.at](http://www.platus.at)

E-Mail: [office@platus.at](mailto:office@platus.at)